



Tail Lift 1500-2000kg

Characteristics

PLATFORM

Light-weight aluminum platform, or heavy-duty steel platform

Aluminum platform with profiles oriented in longitudinal direction [type V...], and a cross milled anti-slip protection pattern

Synthetic rollers for the contact between the platform and the ground

Maximum platform depth: 2600 mm.

FUNCTIONAL & MECHANICAL CHARACTERISTICS

Conical / wedge platform. Level ride with automatic tilt at ground level

Platform tilt adjustable at any position from the exterior controls

HYDRAULICAL CHARACTERISTICS

2 lift cylinders for maximum platform stability

2 tilt cylinders with spring assisted platform opening

Electrical safety valves on all cylinders

Manual emergency operation on all electrovalves

Cylinder piston rods in hard-chromed stainless steel

Cylinders equipped with rubber gaitors and lubrication

Pump unit 12V or 24V DC, accessible on 5 sides for easy maintenance

ELECTRICAL CHARACTERISTICS

With battery disconnect switch: joystick control + change-over switch.

Without battery disconnect switch: dual toggle-switch control box supplied loose.

Electrical controls without sensitive electronic components.

Safe exterior controls with compulsory 2-hand operation.

Electric motor with thermal cut-out fuse.

FITTING

Bolt-on mounting plates for quick and easy fitting

Fixed 3-piece bumper bar available as option

FINISH & MAINTENANCE

Low-maintenance bearings in all articulation points, plus grease nipples

Lift frame in hot-dip zinc plated or "galvanized" finish. Best possible protection against corrosion.

Alu platform or platform sections in natural finish.

Steel platforms to 2000 mm shot blasted and KTL epoxy primed, or in zinc primer at the discretion. Steel platforms > 2000 mm in zinc primer.



Technical Characteristics

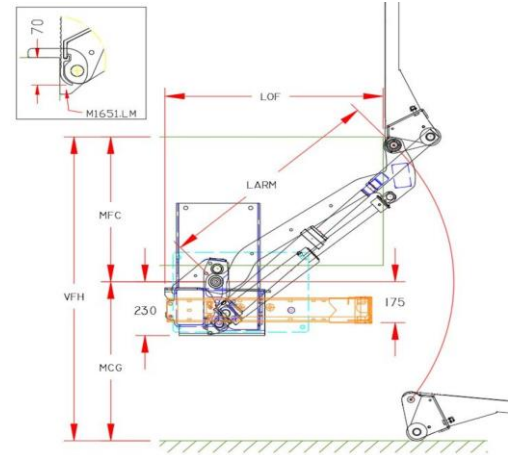
Lift Frame	100x150mm
Cylinders	2 lift cylinders + 2 tilt cylinders
Type of ride	Wedged platform. Level ride + automatic tilt at ground level
Platform material	Aluminum or steel
Platform overlap underfloor	70mm
Standard Control unit	OAE030.BT.1-Joy stick + Battery switch + OAE001
Standard finish of the lift frame	Protection plus or Hot-dip zinc plated finish
Standard platform depths	-Steel: 1500 – 1750 – 2000mm (max. 2250 mm) -Alu: 1600 – 1800 – 2000mm (max. 2250mm)
Standard platform widths	-Steel: 2350 - 2480 - 2500 - 2520 - 2550 mm -Alu: Variable up to 2550 mm in steps of 5 mm
Lift arm lengths	760 - 820 - 880 - 940 - 1000 - 1120 mm
Lift arm widths	800 - [special 1150] - 1200 - 1300 - 1550 mm
Flashing platform lights 12/24v + protection	OAE200.B
Standard lock on R-side of aluminum platform	OAP421.R

Mounting Dimensions

Larm	760	820	880	940	1000	1120
Vfh max.	1215	1330	1410	1500	1585	1750
Mfc max.	625	680	715	770	815	910
Mfc min.	250	300	350	400	400	450
Mcg max.	590	650	695	730	770	840
Lof at mfc max	630	660	710	735	775	850
Lof at mfc min	880	925	970	1015	1080	1190



OAP421.R - 1 standard lock on R-side of aluminum platform



OAE030.BT.1 - Joystick controls + battery switch (+ turn switch)



OAE001 - Set of 2-button wander lead with spiral



OAE200.B - Flashing platform lights 12/24V + protection



Fixed 3-piece bumper in steel, mounted to the lift frame